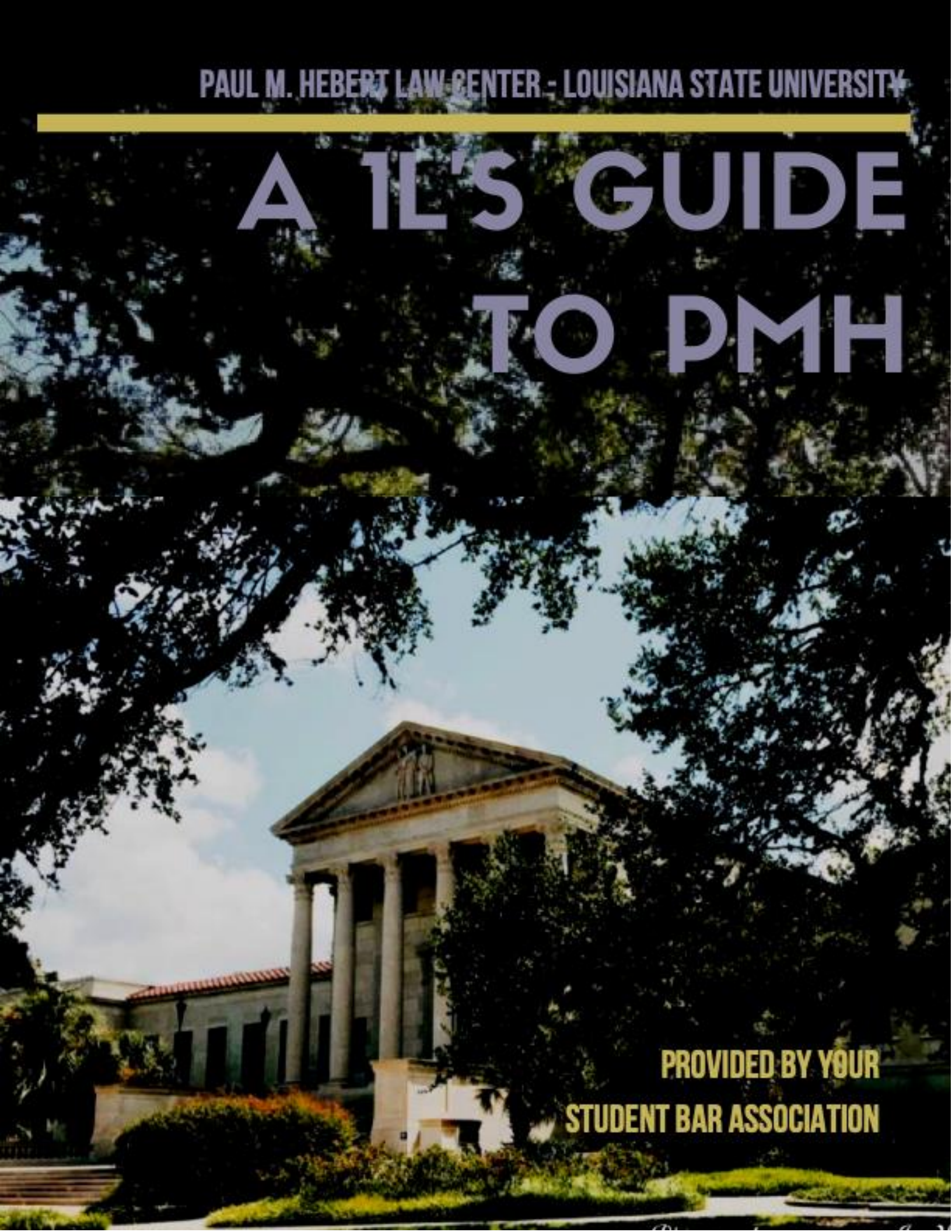


**PAUL M. HEBERT LAW CENTER - LOUISIANA STATE UNIVERSITY**

---

# **A 1L'S GUIDE TO PMH**

**PROVIDED BY YOUR  
STUDENT BAR ASSOCIATION**



# Table of Contents:

1.	A Letter from LSU Law SBA President.....	3
2.	Maps of the Law Center.....	4-6
3.	Notable Rooms.....	7
4.	1L Faculty.....	8-9
5.	LSU Law Administration.....	10
6.	2021 Final Exam Schedule.....	11
7.	2021-2022 Academic Calendar.....	12
8.	How To Get Involved.....	13-16
9.	FAQs.....	17-18
10.	Law School “Lingo”.....	19
11.	How to Work Your Locker.....	20
12.	How to Write a Case Brief.....	21-22
13.	The Do’s and Don’ts of Law School.....	23
14.	SBA Officer Contact Information.....	24

# A Letter from the LSU Law SBA President

To the Class of 2024:

Welcome to the Louisiana State University Paul M. Hebert Law Center! Congratulations for taking the first steps of joining this exclusive profession, and for continuing a tradition that has existed since antiquity. I am honored by your decision to join LSU Law as the institutional gateway of your legal career. You made the right choice.

I'll be honest. This year will be quite overwhelming for you and sometimes it will be downright unbearable. You may find yourself stressed and totally emotionally overcome. This is absolutely normal. The first year of law school is a critical period of growth and change. The world you currently understand will be unveiled and enhanced with new meaning of the law and how our system works as the backbone of society.

It is likely that you will be clueless or lost during your first few class periods. This is also normal. The law carries its own language, concepts, theories, structure and heartbeat that is incredibly difficult to grasp. At times you may feel that your introduction to law is actually a trial by fire. Everyone who has completed law school knows this feeling, so you should never be afraid to seek advice from those around you.

As I mentioned earlier, the first year of law school is a critical period. Your studies this year will be focused on the core principles of law and will establish the foundation of your legal understanding. You will find that your second and third year studies are simply reverberations of these core principles—so make sure to establish a rock-solid foundation! This can only be achieved by hard work, discipline, and sacrifice.

Believe me when I say you are about to embark on the journey of a lifetime. This long and strange trip is not for everyone, but through perseverance and dedication you will be offered opportunities to shape your future that would otherwise be unimaginable! I wish you the best of luck!

Truly,

Alex Domingue

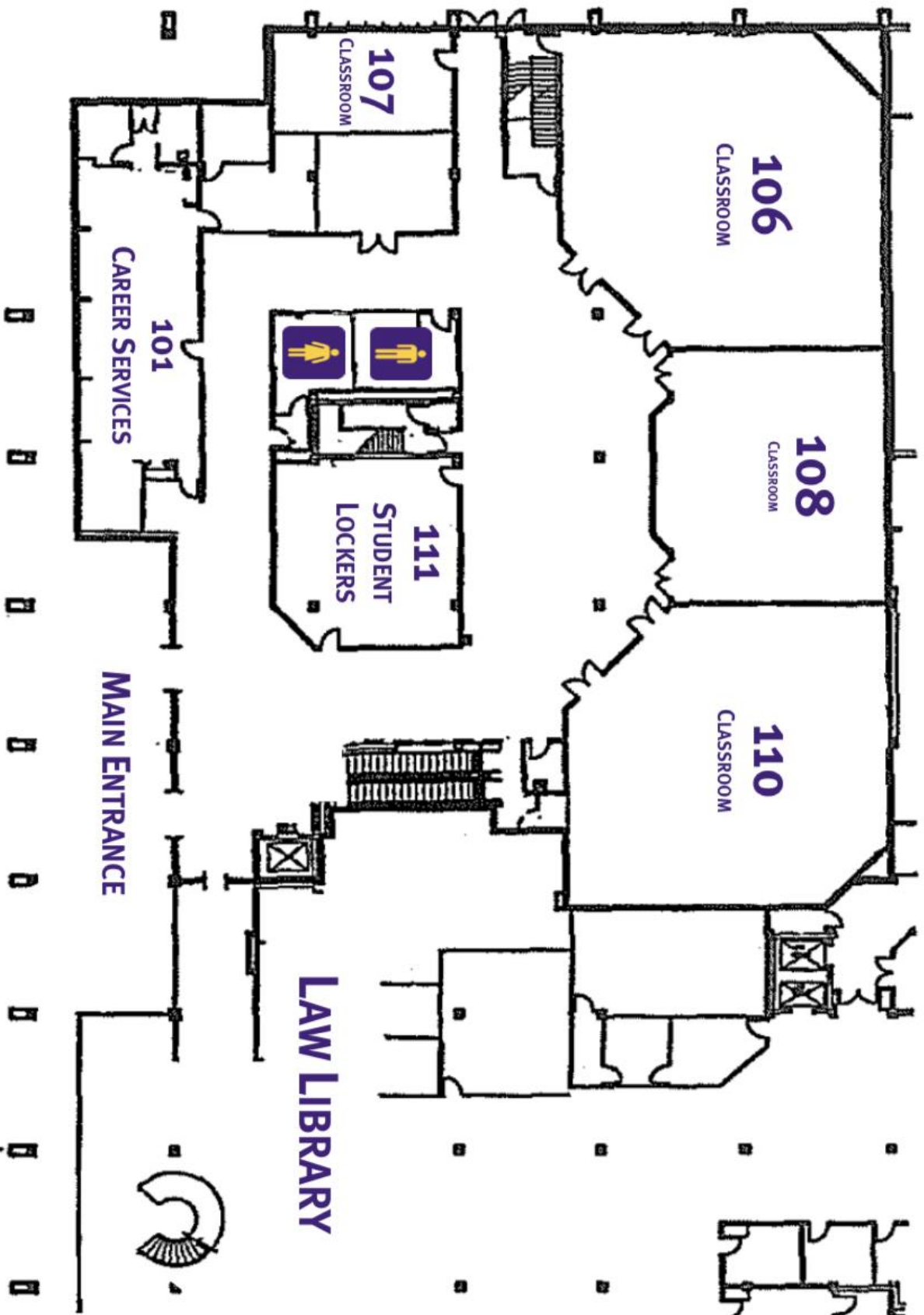
Executive President

LSU Law Student Bar Association



# Paul W. Hebert Law Center

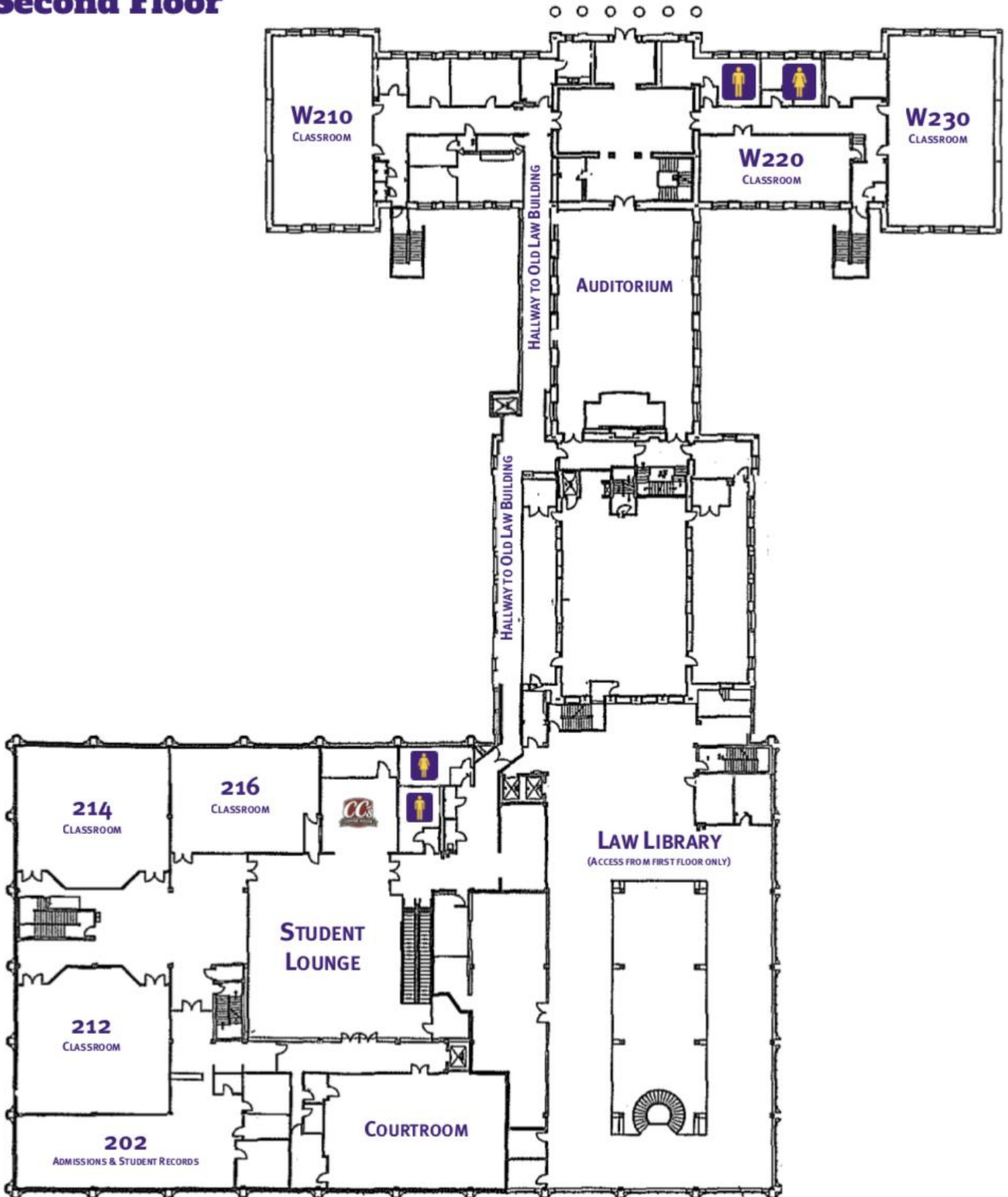
## First Floor



# Paul M. Hebert Law Center



## Second Floor



**Admissions Office – 202**

- Second floor of the new building past CC's Coffee on the left

**Career Services Office – 101**

- First floor of the new building, to the first left hallway once you enter the new building

**Dean Galligan's Office – 400**

- Fourth floor down the long wood hallway through the wooden double doors

**Financial Services – 202**

- Second floor of the new building in the admissions office

**IT Services – 300**

- Third floor of the new building to the right after exiting the main elevator

**List of Professor Offices**

- First floor of the new building to the left of the escalators and locker room
- Third and fourth floors by the main elevator

**LSU Law Clinic – W111-152**

- First floor of the old building at the end of the hallway from the middle elevator

**Locker room – 111**

- First floor of the new building, to the immediate left of the escalators

**McKernan Law Auditorium – W200**

- Second floor of the old building with access from the front concourse

**PUB (Publishing) – 302**

- Third floor of the new building across from 301

**Student Bar Association (SBA) Office – W157**

- First floor of the old building the next right from the JELR office from the old elevator

**Robinson Courtroom – 201**

- Second floor of the new building through the stain glass wall of the student lounge, across from the CC's Coffee

**Tucker Room – W303**

- Third floor of the old building near the writing offices and old elevator

**Vending Machines**

- First floor of the new building under the escalator
- First floor of the old building by the clinics and under front steps
- Second floor in the kitchen to the right after the escalators

**Writing Professor Offices – W300s**

- Third floor of the old building

# 1L faculty\*

\*Class subjects are for first year classes only, many professors teach upper-level classes in addition

## **Lisa Avalos**

*Administration of Criminal Justice I*

Office W304

avalos@lsu.edu

## **Grace Barry**

*Legal Research & Writing*

Office W312

gbarry1@lsu.edu

## **Joseph T. Bockrath**

*Contracts, Civil Procedure I & II*

Office 316

jbockrath@lsu.edu

## **Andrea B. Carroll**

*Associate Dean for Student and Academic  
Affairs*

*Civil Law Property*

Office 450

acarro6@lsu.edu

## **Summer Chandler**

*Contracts*

summerchandler@lsu.edu

## **John M. Church**

*Legal Methods, Torts*

Office 320

jchurch@lsu.edu

## **William R. Corbett**

*Torts*

Office 350

wcorbel@lsu.edu

## **John Devlin**

*Civil Procedure I & II, Constitutional Law I*

Office 340

jdevlin@lsu.edu

## **Raymond T. Diamond**

*Criminal Law, Constitutional Law I*

Office 334A

rdiamond@lsu.edu

## **Darlene C. Goring**

*Legal Methods*

Office 314

dgoring@lsu.edu

## **Keith B. Hall**

*Civil Law Property*

Office W320

khall@lsu.edu

## **Marlene Krousel**

*Legal Research & Writing*

Office W313

krousel@lsu.edu

# 1L Faculty (cont.)

## **P. Raymond Lamonica**

*Civil Procedure I & II, Administration of  
Criminal Justice*  
Office 424  
plamoni@lsu.edu

## **Alain A. Levasseur**

*Legal Traditions, Obligations*  
Office W322  
alevass@lsu.edu

## **Ken Levy**

*Criminal Law*  
Office 420  
klevy@lsu.edu

## **Melissa T. Lonegrass**

*Legal Traditions, Obligations*  
Office 318  
mlonegrass@lsu.edu

## **Olivier Moreteau**

*Director of CCLS*  
*Legal Traditions, Obligations*  
Office: W326C  
moreteau@lsu.edu

## **Clare Ryan**

*Legal Traditions*  
Office W324  
clareryan@lsu.edu

## **Kathy Flynn Simino**

*Legal Research & Writing*  
Office W311  
kflynn2@lsu.edu

## **Scott Sullivan**

*Administration of Criminal Justice I*  
Office 328  
ssullivan@lsu.edu

## **Susan Tanner**

*Legal Research & Writing*  
Office W317  
susantanner@lsu.edu

## **Margaret S. Thomas**

*Civil Procedure I & II*  
Office 322  
maggiethomas@lsu.edu

## **Heidi Thompson**

*Legal Research & Writing*  
Office W305  
hthomp3@lsu.edu

## **John R. Trahan**

*Civil Law Property*  
Office 338  
jrtrahan@lsu.edu

## **Lécia Vicente**

*Legal Traditions, Obligations*  
Office 345  
vicente1@lsu.edu



# LSU Law Administration

**Melanie Anderson**

*Assistant Director of Career Services*  
Office 101

**Jeffrey C. Brooks**

*Director of Externships & Moot  
Court/Trial Advocacy Program*  
Office W155

**Isaac Clark**

*Instructional Technology Associate*  
Office L121B

**Gwendolyn L. Ferrell**

*Associate Director of Career Services  
and Employer Relations*  
Office 101

**Jake T. Henry, III**

*Director of Admissions*  
Office 202

**Daphne A. James**

*Associate Director of Admissions*  
Office 202

**Christabelle Lefebvre**

*Coordinator of CCLS and International  
Programs*  
Office W325

**Rita Parham**

*Information Services Librarian*  
Office L109

**Aimee Pittman**

*Reference Librarian*  
Office L103

**Melanie Sims**

*Head of Access Services and Government  
Information*  
Office L101

**Michael Sparks**

*Director of Information Technology*  
Office 317C

**Melissa Strickland**

*Reference Librarian*  
L104

**Ryan S. Waits**

*Assistant Coordinator of Law Admissions  
and Student Records*  
Office 202

# Fall 2021 Final Exam Schedule

<b>First Year Exam Schedule - All first year exams begin at 1:30 p.m.</b>	
<i>Course</i>	<i>Date</i>
<b>Criminal Law</b>	<b>Wednesday, December 1, 2021</b>
<b>Torts</b>	<b>Friday, December 3, 2021</b>
<b>Basic Civil Procedure I</b>	<b>Monday, December 6, 2021</b>
<b>Legal Traditions &amp; Systems</b>	<b>Wednesday, December 8, 2021</b>
<b>Contracts</b>	<b>Friday, December 10, 2021</b>

*\*Room assignments will be released later in the semester\**

# 2021-2022 Academic Calendar



Academic Calendar 2021-2022\*

## Fall Semester 2021

Trial Advocacy Program	August 9, 10, 11 (M, T, W)
Entering Class Orientation	August 12, 13 (Th, F)
Classes Begin	August 16(M)
Final Day for Adding Classes	August 23 (M)
Last Day to Drop a Class without receiving a Grade of 'W'	August 23 (M)
Law 14 <sup>th</sup> Class Day	September 2 (Th)
Labor Day Holiday	September 6 (M)
Midterm Examinations	October 14, 15 (Th, F)
Reading Days	October 21, 22 (Th, F)**
Final Day for Dropping Classes (will receive grade of 'W')	October 29 (F)
Classes End	November 24 (W)
Thanksgiving Holidays	November 25, 26 (Th, F)
Examinations Begin	December 1 (W)
Examinations End	December 11 (S)
End of Semester	December 17 (F)
Winter Holiday Begins (Law Center Closes 4:30pm December 23)	December 24 (F)*
Law Center Offices re-open	January 4, 2022 (T)
Grade Deadline for All Fall 2021 Grades	January 4, 2022 @ 10 am (T)
Grades available to view in MyLSU	January 7, 2022(F)
Degree Date for Fall 2021	January 7, 2022(F)

## Spring Semester 2022

Law Center Offices re-open	January 4, 2022 (T)
Apprenticeship Week	January 4 - 8 (T - S)
Classes Begin	January 10 (M)
Martin Luther King Day (Law Center closed - no classes)	January 17 (M)
Final Day for Adding Classes	January 18 (T)
Last Day to Drop a Class without receiving a Grade of 'W'	January 18 (T)
Law 14 <sup>th</sup> Class Day	January 28 (F)
Mardi Gras Holidays (Law Center Offices closed only March 1)	February 28, March 1 (M, T)
Final Day for Dropping Classes (will receive grades of 'W')	April 1 (F)
Reading Days (Law Center Offices closed only April 15)	April 14, 15 (Th, F)
Classes Resume	April 18 (M)
Classes End	April 22 (F)
Examinations Begin	April 26 (T)
Examinations End	May 9 (M)
Commencement	May 20 @ TBA (F)
Grade Deadline for all Spring Courses	May 25 @ 10:00 am (W)
End of Semester	May 27(F)
Grades available to view in MyLSU	May 27(F)
Degree Date for Spring 2022	May 27(F)

## Summer Semester 2022

Classes Begin	May 31 (T)
Final Day for Adding Classes	June 3 (F)
Last Day to Drop a Course without receiving a Grade of 'W'	June 3 (F)
Law 7 <sup>th</sup> Class Day	June 8(W)
Juneteenth Holiday (no classes - Law Center Offices open)	June 20(M)
Final Day for Dropping Classes (will receive grades of 'W')	June 24 (F)
Independence Holiday (Law Center Offices closed - no classes)	July 4(M)
Classes End	July 15 (F)
Examinations Begin	July 18 (M)
Examinations End	July 22(F)
Grade Deadline for all Summer Grades	August 9 @ 10:00 am (T)
Grades available to view in MyLSU	August 10 (W)
Degree Date for Summer 2022	August 10 (W)

\*Faculty and Staff should refer to Permanent Memorandum No. 5 (PM -5) for LSU Holiday Schedule

\*\*Subject to Change: Reading Days will be the same days as LSU 2021 Fall Break

Approved Law Faculty Feb 6, 2019 - Updated June 9, 2020 based on LSU 2021-2022 updates - Updated Aug 20, 2020 - Juneteenth

# How to Get involved – Our Organizations

**American Constitution Society** – the nation’s leading progressive legal organization founded on the principle that the law should be a force to improve the lives of all people.

**Barristers Bowl Cheerleaders** – club organized to provide cheerleaders for the annual Barrister’s Bowl every spring who participate by cheering and performing a routine during the game as well as organizing many Bowl activities.

**Black Law Student Association (BLSA)** – organization that addresses not only legal issues of general concern but also legal issues of particular concern to the minority community.

**Board of Advocates** – LSU Law’s student honor organization for 3L students that is dedicated to the promotion and development of oral and written persuasive advocacy skills.

**Cannabis Law Society** – a student led organization that aims to advance legal knowledge regarding cannabis in Louisiana by advocating for its constituents, collaborating with various legal entities to disseminate facts, and affecting change through legislation. LCLS provides a forum for all students to further their interest in legal developments of cannabis as well as legal issues relevant to the cannabis industry. Our goal is to foster the academic, social, and professional growth of our members by sponsoring legal scholarly activities, social events and community service.

**Children and Family Law Society (CLFS)** – organization that addresses family and children legal issues of general concern, providing students with additional family law educational and volunteer opportunities.

**Christian Legal Society (CLS)** – organization that endeavors to provide a forum whereby all students can discuss legal issues and faith from a biblical perspective, fellowship with other believers, and participate in compassionate service.

**The Civilian** – organization LSU Law’s student run news publication published once a month, four times a semester. The Civilian serves the LSU Law community with in-depth journalism, reports on current events, thoughtful opinions, editorials, and regular columnists.

**Cornerstones** - organization focused on helping students manage stress of law school and practice building a work-life balance for their future legal careers

**Environmental Law Society** – organization to promote environmental awareness and to allow students to participate in projects that will enable them to learn more about environmental law.

**Federalist Society** – organization that attempts to create a sense of community and promote the exchange of ideas among conservatives through scholarly debate and discussion.

# How to Get involved (cont.)

**Football Club (Barrister's Bowl)** – club organized to provide football players for the annual Barrister's Bowl every spring who participate through practice and gameplay.

**Golf Club** – organization which invites all golf pros, novices, or anyone wanting to simply de-stress after a long day of classes and studying to come out and play a round,

**Hispanic Law Student Association (HLSA)** – organization that promotes professional development and networking opportunities to LSU Law students, and to encourage the participation of Hispanic law students in the legal community.

**Immigration Law Association** - is a student run organization dedicated to educating the student body about issues in modern immigration law. The Immigration Law Association offers opportunities for students to engage in pro bono and volunteer activities in areas relating to immigration law and assists students in networking with immigration attorneys.

**International Law Students Association (ILSA)** – organization that is dedicated to the promotion of international law. ILSA provides students with opportunities to study, research, and network in the international legal area.

**Journal of Energy Law and Resources (JELR)** – organization student-edited academic journal focusing broadly on energy and its relationship to other areas of law. The JELR was created to promote the study of energy law and the effects of technological innovation on a local, national and international level.

**LA Association of Criminal Defense** – organization which works to promote a fair and just criminal defense system through education, advocacy and the development of effective and professional criminal defense lawyers.

**Louisiana Business Law Society** – organization devoted solely to the interaction between law and business, educating its members about careers related to business and corporate law. The organization regularly hosts guest speaker events, professional networking opportunities and provides its members with a forum to discuss legal issues faced by both Louisiana and out-of-state businesses.

**Louisiana Law Review** – organization established to encourage legal scholarship in the student body, act as an incentive to and provide a method of training in individual research, contribute to the development of the law by scholarly criticism and analysis, foster the study of civil and comparative law, and serve the bar of the state by comments on and discussion of current cases and legal problems. It is edited by a board of student editors, with faculty cooperation.



# How to Get involved (cont.)

**LSU Law Tennis Club** – organization which invites all tennis pros, novices, or anyone wanting to simply de-stress after a long day of classes and studying to come out and play against your fellow classmates. The club encourages weekly tennis matches at the UREC courts for a fun way to meet your classmates and take some time outside.

**LSU Law Space Law Society** – new student organization that explores the law of outer space. As human exploration and use of outer space continues to increase in the public and private sectors, space law is more prevalent and more necessary than ever before. The Space Law Society seeks not only to discuss and promote contemporary space law topics, but also to foster connections between LSU Law students and the space industry.

**Maritime Law Society** – offers students the opportunity to gain exposure to the practice and study of maritime law through networking with practicing attorneys, learning from leading scholars in the field, and discussing current events with industry executives. The Society gives members the opportunity to further their writing experience through publication on its website.

**OUTLaw at LSU Law** – organization focused on creating a climate at the LSU Paul M. Hebert Law Center in which it is safe and comfortable to be openly lesbian, gay, bisexual, transgender, or an ally (“LGBT”). OUTlaw seeks to create an atmosphere of acceptance and comfort, instill justice, and combat discrimination based on sexual orientation, gender identity, and gender expression. The organization exists to provide support and a sense of community while simultaneously engaging in political activism and advocacy.

**Phi Alpha Delta (PAD)** – organization international legal fraternity that fosters legal education and the profession, not only in law schools, but also in undergraduate universities, high schools and even in elementary schools. P.A.D. pursues a plan to promote and enhance the image of the law student and the legal profession in the general community.

**Public Interest Law Society (PILS)** – organization that helps law students advance the public interest through one-time projects, semester-long efforts, and public interest careers. PILS works to increase the number of public interest opportunities available to LSU law students in the Baton Rouge community and nationwide by administering a fellowship fund for summer public interest internships and organizing projects to help the local community during the school year.

**Running Club** – organization which invites all runners, joggers, walkers and para-cyclers alike to train for an upcoming race or simply de-stress after a long day of classes and studying. The club encourages all students to join the club’s activities, which include bi-weekly runs; organizing Race Judicata (the longstanding charity race LSU Law hosts in the Spring); and receiving an awesome dry-fit running shirt.

# How to Get involved (cont.)

**Student Bar Association (SBA)** - comprises all students in the Law Center. The association promotes and coordinates student activities within the Law Center and serves as an instructional medium for postgraduate bar association activities.

**Society of Asian Lawyers** – a student led organization that aims to represent the minority views of Asian students at the law center and the legal profession by creating a voice for Asian-Americans in today's practice of law. SAL provides a forum for all students to further their interest in legal developments in Asia as well as legal issues relevant to the Asian American community. Our goal is to foster the academic, social, and professional growth of our members by sponsoring legal scholarly activities, social events and community service.

**Sports Entertainment Media Law Society** – organization that works to promote information to students interested in a career in entertainment and media law, as well as provide networking opportunities with lawyers associated with the field.

**Tailgating Club** – organization which invites all interested in organizing and setting up all home game tailgates for the Law Center.

**Tax Law Society** – a nonpartisan student organization dedicated to assisting interested students in the exploration of tax policy and procedure issues, facilitating LL.M. admissions for our LSU tax students, and providing pro bono tax assistance for the University's international community through our Volunteer Income Tax Assistance Program (VITA).

**Texas Tigers, Esq.** – an organization for students interested in beginning their legal career in Texas. Our aim is to give students information, tips, and insight on how to secure a career in Texas

**Student Veterans Association** – coalition of student veteran groups on college campuses across the United States and overseas which coordinate campus activities, provide pre-professional networking, and generally provide a touchstone for student veterans in higher education. The association is focused on providing military veterans with the resources, support, and advocacy needed to succeed in higher education.

**Women's Law Student Association (WSLA)** – organization which serves the school and community in recognizing the role of women in the law profession as well as assisting future female attorneys in Louisiana and elsewhere.

# FAQs

**Q:** Where can I go for financial aid information?

**A:** Counselors are available to help students in the admissions office on the second floor of the law center, past CC's Coffee.

**Q:** What is the exam vault and how do I get into it?

**A:** The vault is a locked room in the library where the law center houses old exams of professors from years past. These old exams serve as a great study tool for students and can be accessed by asking any librarian or student worker for help getting to the vault.

**Q:** Is there any other way to access old exams?

**A:** On the LSU Law website, all students can access the LSU Law File Server to search for past exams. Simply search for "past exams LSU Law" and follow the server to locate your professor, class and paste exams.

**Q:** What are print credits and how do I use them?

**A:** Each semester, each student receives \$45.00 in print credits enabling students to use the schools' printers located in the back of the library. Search the LSU Law website for the printer connection instructions to be able to print directly from your laptop or computer. Each page costs \$0.06, and once all print credits are used within the semester, students may add additional print credits through their LSU TigerCard account. Print credits do not roll over to the next semester if not used.

**Q:** What should I wear to class?

**A:** LSU Law is a comfortable law school that encourages professionalism and confidence in the classroom. As such, the school has no dress code and most students dress casual day-to-day. For females, nice jeans and a casual top is great for the first few weeks but go ahead and put on those yoga pants for finals. For males, students wear anything from a suit to gym-attire.

**Q:** Can I buy an older edition of a textbook for my class?

**A:** Older editions of textbooks may be fine for some classes but consult with your professor first before purchasing any edition not specified by the professor!!

**Q:** Do I really need to read everything?

**A:** ABSOLUTELY! While it may seem at times like there is not enough time in the day to finish your reading assignments, always read for class.

## FAQs (cont.)

**Q:** Can I use my computer in class?

**A:** Unless explicitly stated otherwise, most professors allow technology use in the classroom. Be careful not to abuse the privilege though as it has been stripped by some professors in the past! Side note: most students use Microsoft Word and OneNote for easy note taking.

**Q:** Where are the best places to buy books?

**A:** Search for your textbooks using the ISBN number online and bargain hunt as much as possible!! Law textbooks can get pricey quick so make sure to see which sites have decent prices. Amazon and other popular online stores usually will have all your textbook needs for online shopping. Claritor's (on the corner of Perkins and Acadian) has almost all LSU Law textbooks and is a great place to quickly buy your textbooks.

**Q:** How do you outline?

**A:** Everyone has their own way of outlining, but an easy habit to start your first semester is to revise and condense your notes every Friday, gradually adding to your outlines. This way you will have a decent start on your outline before crunch time begins in a few months. **Beware**, although finals may seem distant, most students lose track of time and are frequently cramming at the end of the semester!

# Law School “Lingo”

- **Affirmed** – judge confirms a ruling after it's been appealed
- **Answer** – a defendant's first pleading that addresses the merits of the case
- **Appeal** – an action requesting a review of a decision by either a Court of Appeals, State Supreme Court, or the US Supreme Court
- **Black letter law** – the straightforward and basic rule
- **Case brief** – a summary of the case focusing on the most important aspects of the case mainly to help students prepare for case analysis, class and exams
- **Citation** – the annotation of where a source or case can be found (ex: *Int'l Shoe Co. v. Wash.*, 326 U.S. 310.)
- **Civil Law** (vs. criminal law)– the system of law concerning private relations and injuries, rather than criminal law
- **Civil law** – (vs. common law) the legal tradition, dating back to Roman times, which predominates the European continent and Louisiana, and is based on codal law rather than a developing precedent
- **Clinics** – LSU law holds student-run clinics for free legal services to the community, allowing students to practice under the supervision of faculty before graduation
- **Common law** – the legal tradition, dating back to early English rule, which predominates the United States, and is based on developing precedent; also known as judge-made law
- **Complaint** – the initial pleading that starts a civil action
- **Concur** – judge agrees with the outcome of the case, but wants to add additional commentary to the decision
- **Criminal law** – the system of law concerning the punishment of offenders
- **Defendant** – person sued in a civil proceeding or person accused in a criminal proceeding
- **Dicta** – additional analysis in a decision, usually communicating an additional issue in the case
- **Dissent** – a judge may disagree with the outcome of the case and offer an alternative view against the majority
- **Holding** – a court's decision of a matter of law in a case
- **Journal** – the collection of scholarly publications presenting legal commentary of students and professors about developments in the law
- **Judgement** – a court's final determination of the issues present in the case
- **Jurisprudence** – usually referring to the legal system or the legal precedent; can also be referring to the specific legal text
- **Memo** – primary form of inter-firm communication; 1L students will learn to write their first memo in their fall semester
- **Motion** – written or oral application requesting a court to make a specified ruling or order
- **Outline** – the collection of notes over a semester conjoined as a study tool for exams
- **Opinion** – a court's written statement explaining its decision in a given case
- **Plaintiff** – the party who brings a civil suit
- **Precedent** – how courts have ruled previously which lower courts must follow
- **Remand** – action by the judge sending an appealed case back to the last court to redress an issue in a case
- **Reversal** – to overturn a lower court's decision
- **Stare decisis** – legal principle which is the foundation of the common law; a court in the same jurisdiction must follow earlier judicial decisions when the same points arise in litigation
- **Simplicity** – the online job-search website used by LSU Law's career services to post job-listings and opportunities for students; more information will be available to 1Ls later in the fall semester
- **Traditions** – the legal traditions course taught to 1L students to develop their understanding of the history of the civil law system in Louisiana



# How to Work Your Locker

- All students are given the opportunity to receive a locker in our common locker room to house all books, possessions and the like
- 1Ls are assigned their locker through the SBA during August orientation
- Any locker issues should be diverted to the SBA

## Q: How do I open and close my locker?

- To **open** your locker:
  - Turn the number dials to your combination
  - Turn the black lock “arrow” to the UP or UNLOCKED position
  - Pull the locker door open
- To **close** your locker:
  - Make sure your code has not been changed since opening your locker
  - Shut the locker door
  - Turn the black lock “arrow” to the LEFT or LOCKED position
  - Scramble your number dials to protect your combination

## Q: HELP, what do I do if I lock myself out of my locker/my lock is stuck?

- Please text **225-800-7068** with the following phrase:
  - “Hi, my name is \_\_\_\_\_. I need my locker reset. It is #\_\_\_\_\_. My preferred code is \_\_\_\_\_. Thank you!”
- An SBA officer will reset your code and will text you a confirmation once it has been reset

## Q: How can I reset my locker code?

- Put the black lock “arrow” in the UP or UNLOCKED position
- Enter your desired combination while the black lock “arrow” is in the UP or UNLOCKED position
- Shut the locker door and turn the black lock “arrow” to the LEFT or LOCKED position
- Scramble the number dials to protect your combination

# How to Write A Case Brief

- Students are expected to brief cases given within their assigned reading for class every day. A case brief is a brief summary of a case, detailing the important facets of the case and the reasoning behind the holding by the court. Students use case briefs to, first and foremost, prepare for class in the event they are called on and secondly, as a study aid for final exams.
  
- Briefs should include the essential elements of a case and provide a clear ‘roadmap’ for you to quickly recall and understand the case. While briefs vary between students, most include the following essential sections:
  1. Title and citation
  2. Facts of the case
  3. Issues
  4. Decisions (holdings)
  5. Reasoning (rationale)
  6. Separate opinions (concurrences and dissents)
  7. Analysis
  
- For each section, be sure to include the pertinent facts and quotes from the case to accurately tell the story, the reasoning, and the holding of the case. Each assigned case has a purpose for being included in the material, so make sure to connect cases and reasonings within your assigned reading.

## **Lake Land Employment Group of Akron, LLC v Columber (2004)**

101 Ohio St.3d 242, 804 N.E.2d 27

### **Roles:**

Plaintiff/appellant: Lake Land Employment Group of Akron, LLC (employer)

Defendant/appellee: Lee Columber (former employee)

### **Facts:**

- ∇ D signed noncompete agreement for 3 years after termination, 50-mile radius of Akron, Ohio with competing business
- ∇ D signed noncompetition agreement 3 years into his employment with P with no salary increases, promotions or firings
  - P states: D violated terms by working for competitive business within the contracted term
  - D states: P did not fulfill benefit to promise thus consideration was not necessary for promise that was without a promise
    - P states: promise was fulfilled by not firing D, P was an at will employer, thus D could have been fired at any point

### **Procedural background:**

- ∇ SC Ohio
  - Reversed
  - Consideration exists to support noncompetition agreement when the employer continues an at-will employment relationship that could legally be terminated without cause
- ∇ Court of Appeals
  - Affirmed
  - Is continued employment sufficient consideration for noncompete agreement?
- ∇ Trial court
  - D filed for summary judgement: granted
  - Noncompetition agreement lacked consideration and therefore unenforceable

### **Legal Issue:**

- ∇ There was no bargain or express statement as to consequences of not signing (firing Columber)
- ∇ Was the employee's promise not to compete supported by the consideration?

### **Reasoning:**

- ∇ Previous cases have argued that continued employment is NOT sufficient consideration because employee has no bargaining power since he is already employed
- ∇ Other courts have found that continued employments have been sufficient considerations where a substantial period of employment ensues after noncompetition agreement is signed, especially when it is accompanied by raises, promotions or other benefits
- ∇ Execution of noncompetition agreement changes employer-employee agreement from one at-will

### **Dissent:**

- ∇ (I) For contract to be binding, D would've have had to give something up like a bonus or a raise for P
- ∇ (I) Is nonbinding because D gave up his right to compete in the future for nothing, employer is only benefactor
- ∇ (I) P essentially ended with both the noncompetition agreement and the continued right to fire the employee while employee had no job security (remained at-will) and relinquished rights to compete
- ∇ (II) employer's agreement not to terminate an employee if he signs a noncompetition agreement does not constitute consideration – it is coercion

### **Holdings:**

- ∇ Reversed

### **Vocab:**

- ∇

# The Do's and Don'ts

## Do's

### ➤ DO ALWAYS READ

- Do sign up for the mentorship program
- Do try to attend all Wednesday lunch sessions with tutors
- Do take care of yourself mentally, emotionally, and physically
- Do make an effort to make friends to commiserate with
- Do go meet with your professors to chat about life, sports, classes, etc.
- Do find your best place to study FOR YOU!!!  
(Hint: it's not always the library)
- Do work harder than you've ever worked before
- Do have some fun (LSU is a hard but fantastic school to go to!)
- Do make as many friends as you can during your 1L year!!
- Do take quiet time for yourself
- Do find a family member or friend you can unload on with law school stresses

## DON'TS

### ➤ DON'T STOP READING

- Don't procrastinate ('cause that stuff catches up to you so hard)
- Don't try to cram (IT NEVER WORKS, ESPECIALLY HERE!!)
- DON'T SKIP CLASSES unless you absolutely have to!
- Don't isolate yourself (study groups and friends share notes, outlines, etc.)
- Don't burn yourself out early, it's a marathon not a sprint
- Don't waste your weekends
- DON'T TALK ON THE THIRD AND FOURTH FLOOR OF THE LIBRARY
- Don't study in the library just because you think it's the "thing to do"  
(everyone finds their study habits and yours might not be at the library!)
- Don't compare yourself, your study habits, your notes, etc. to the person next to you
- Don't wear hats in Professor Levasseur or Church's classes!! (they're old-school professors and will disapprove of hats in the classroom!)

# SBA Officer Contact Information

## EXECUTIVE OFFICERS:

**Alex Domingue** – *Executive President*  
adomi39@lsu.edu

**Dylan Scully**  
*Executive Vice President*  
dscull3@lsu.edu

**Drew Hughes**  
*Executive Treasurer*  
ahugh56@lsu.edu

**Katie Gonsoulin**  
*Executive Secretary*  
kgonso2@lsu.edu

**Shawn Waldron**  
*Executive Director of Programming*  
swaldr8@lsu.edu

## 3L OFFICERS:

**Austin Pottorff** - *3L President*  
apotto1@lsu.edu

**Meghan Falcon** - *3L Vice President*  
mfalco3@lsu.edu

**Heidi Bieber** – *3L Secretary*  
hbiebe2@lsu.edu

**Madeleine Murphy** - *Class Representative*  
mmurp71@lsu.edu

**Sarah Tadros** – *Class Representative*  
stadro1@lsu.edu



## **2L OFFICERS:**

**Neyah Johnson** – *2L President*  
njohn88@lsu.edu

**Damian Olvera** – *2L Vice President*  
dolver2@lsu.edu

**Chrissie Davidson** – *2L Secretary*  
cdav165@lsu.edu

**Ryan York** – *Class Representative*  
ryork1@lsu.edu

**Autumn White** – *Class Representative*  
awhi198@lsu.edu